

Watershed Awakening

Connecting College and
Community to a Shared Place

Dr. Gail Gunst Heffner

Dr. David Warners

Calvin College

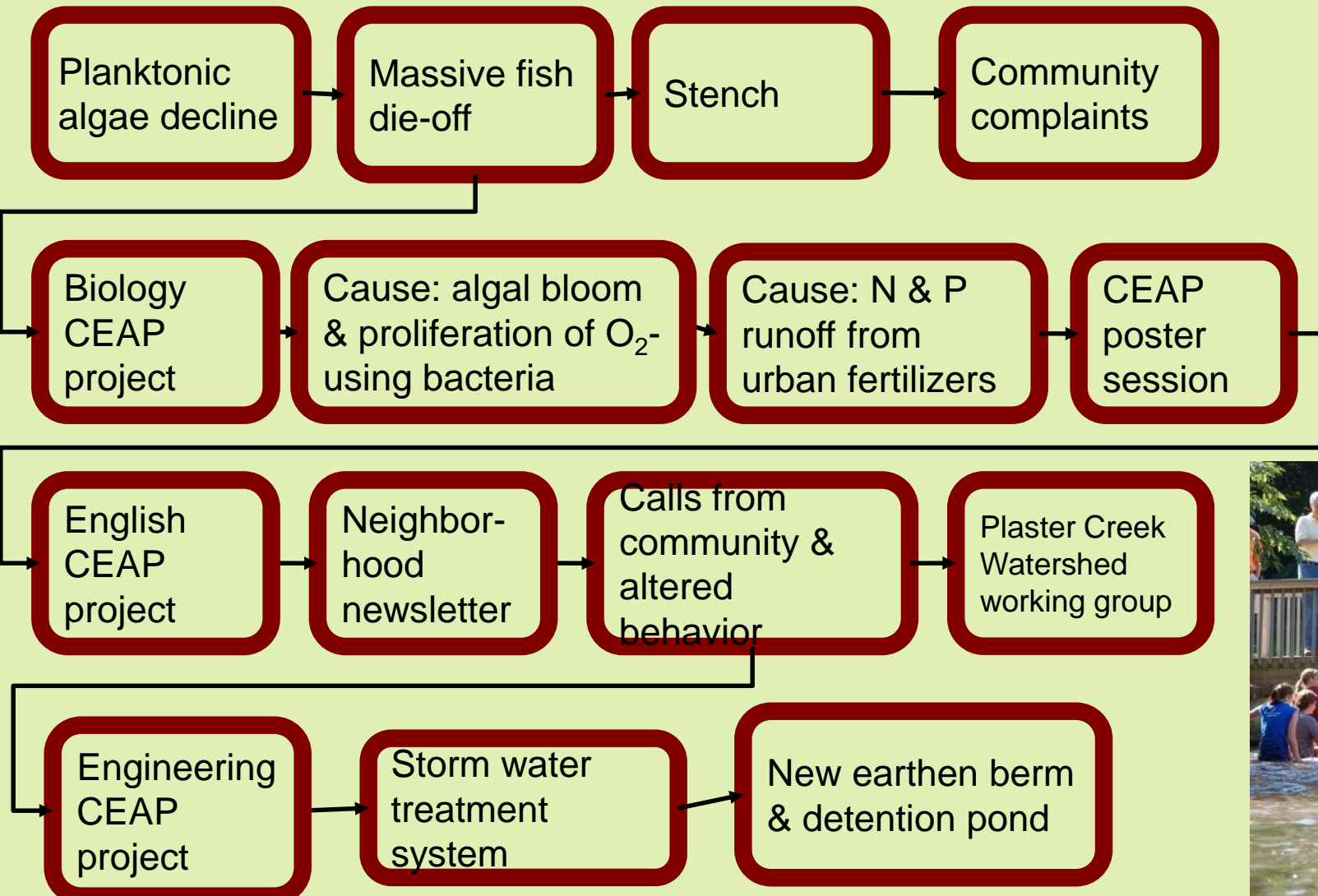




History and Context at Calvin College

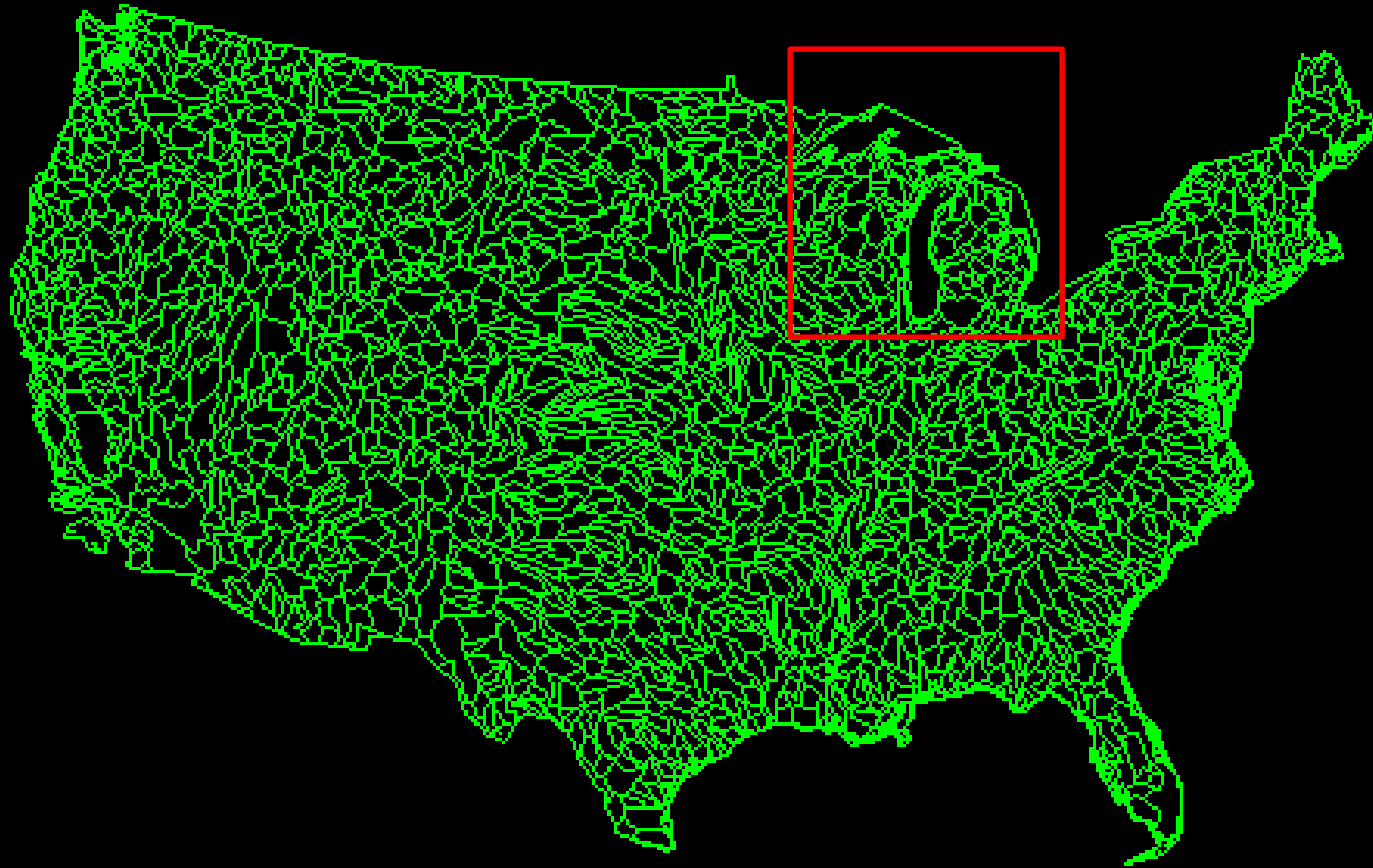
- Academically Based Service-Learning as the entrée to sustainability
- Led to the creation of the Calvin Environmental Assessment Program (CEAP)
- Served as a catalyst for significant institutional change at multiple levels within the college

CEAP: an evolving conversation leading to action

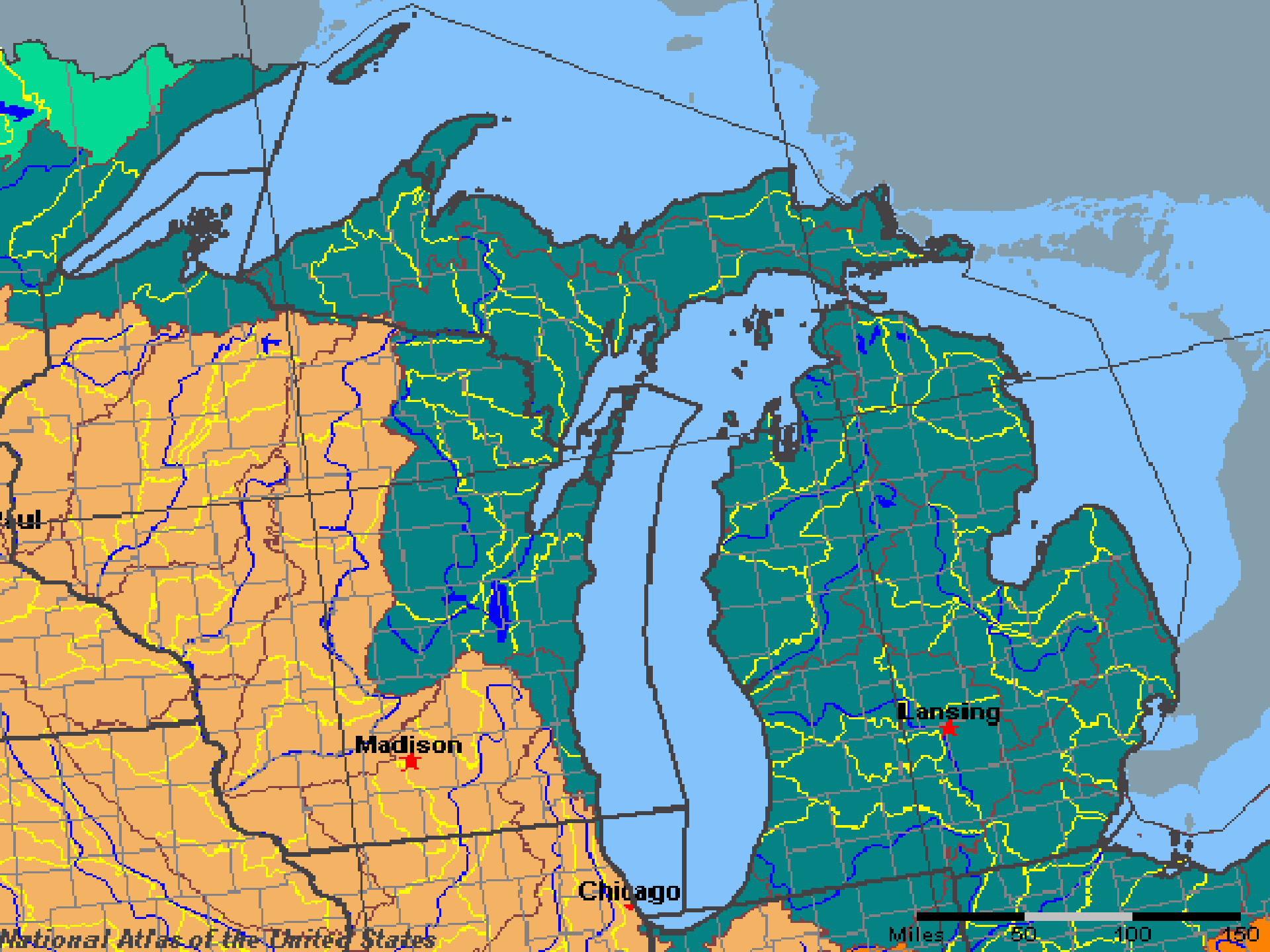




Hydrologic Units map



Watersheds are topographical and hydrological units that integrate the landscape into nested sets of drainages.



ul

Madison

Lansing

Chicago

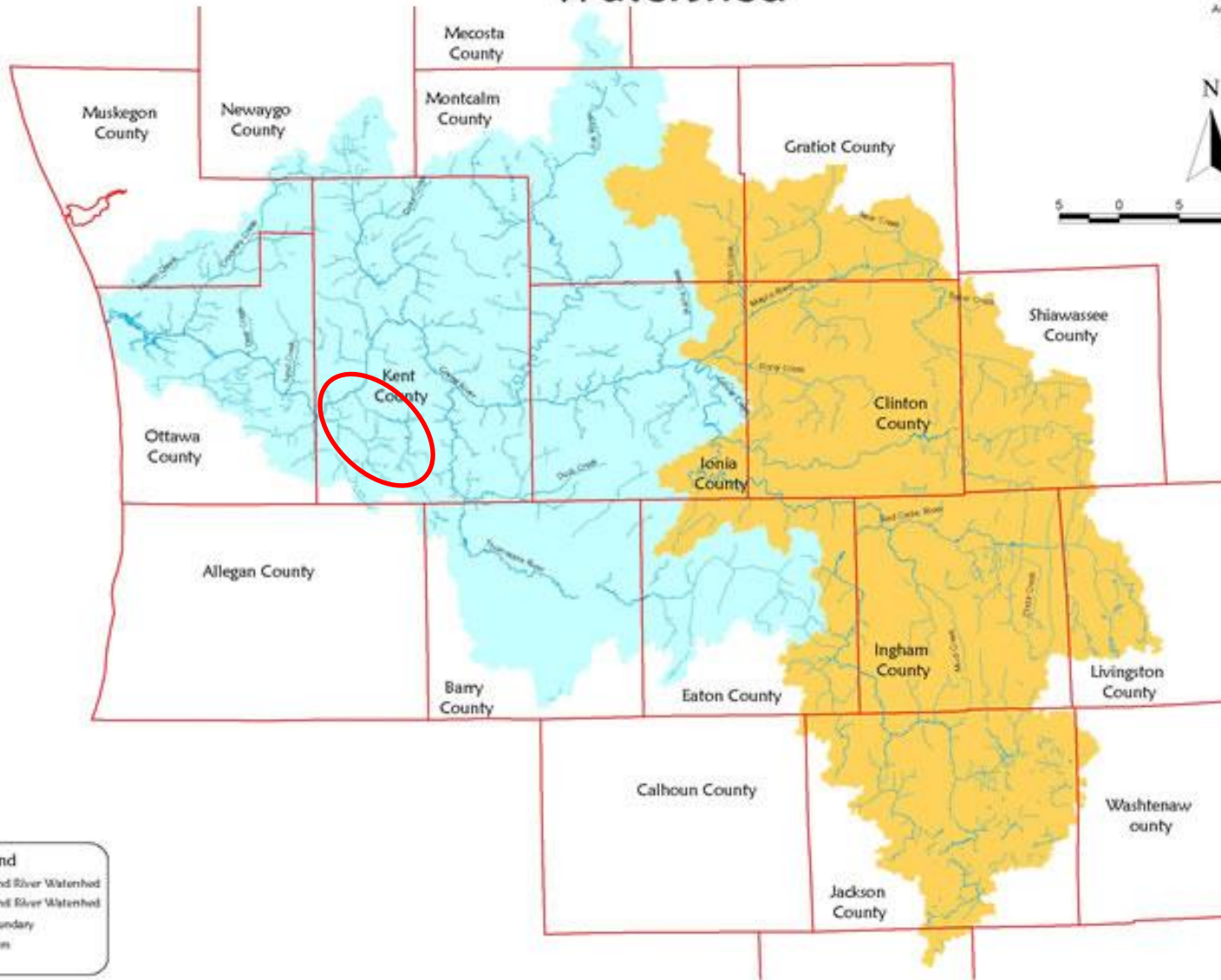


Lower Grand River Watershed Project

Lower Grand River and Upper Grand River Watershed

Base Information
Michigan Center For Geographic Information
Michigan Geographic Data Library

Grand Valley State University
Annis Water Resources Institute
Information Services Center



Legend

- Lower Grand River Watershed
- Upper Grand River Watershed
- County Boundary
- River/Stream

fitch
Wendy Ogilvie
(616) 464-3915
ewogilvie@fitch.com

GVMC

(616) 776-3876
planning@gvmc.org

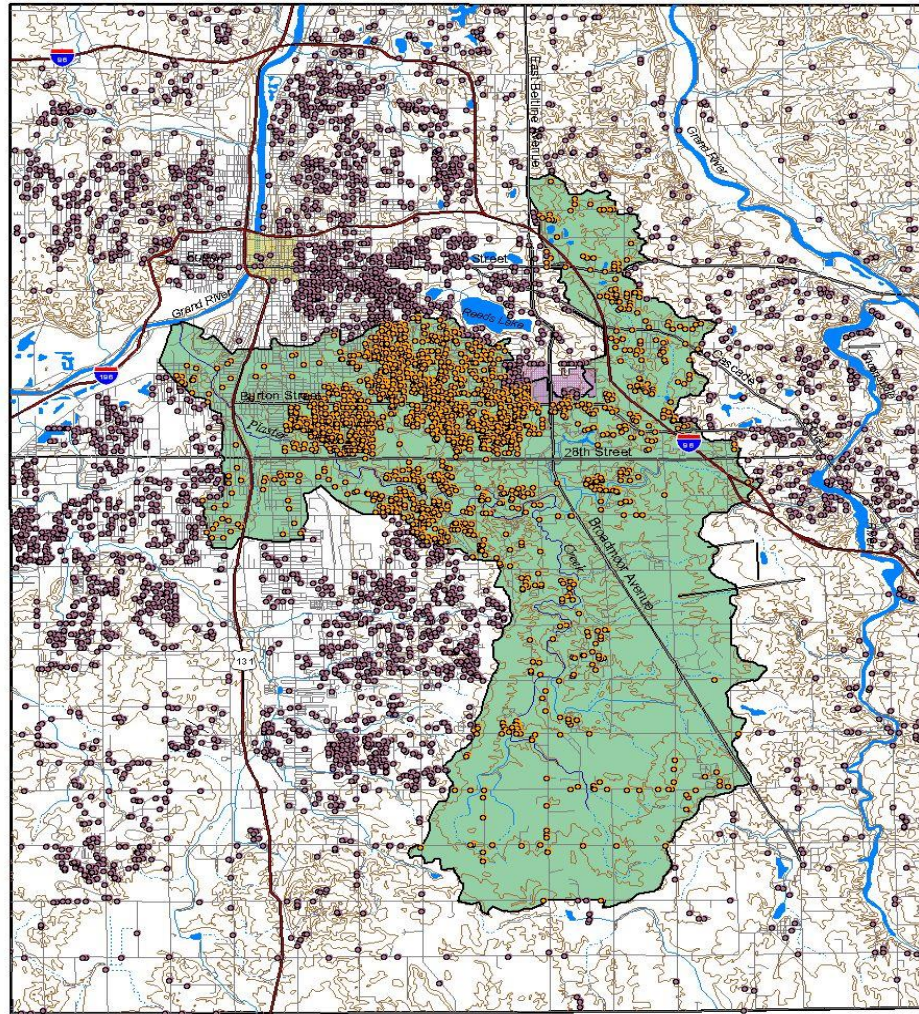


Abigail Matzke
(616) 331-3994
matzkaa@grvs.edu



This document was developed in partnership with the Michigan Department of Environment and Natural Resources. The Michigan Department of Environment and Natural Resources does not warrant, either explicitly or implicitly, the accuracy or completeness of the information provided. The user assumes all liability for any use of this information. For more information, please contact the Michigan Department of Environment and Natural Resources at (616) 224-2800.

Calvin College Alumni Living within the Plaster Creek Watershed



2 0 2 4 6 8 10 Miles



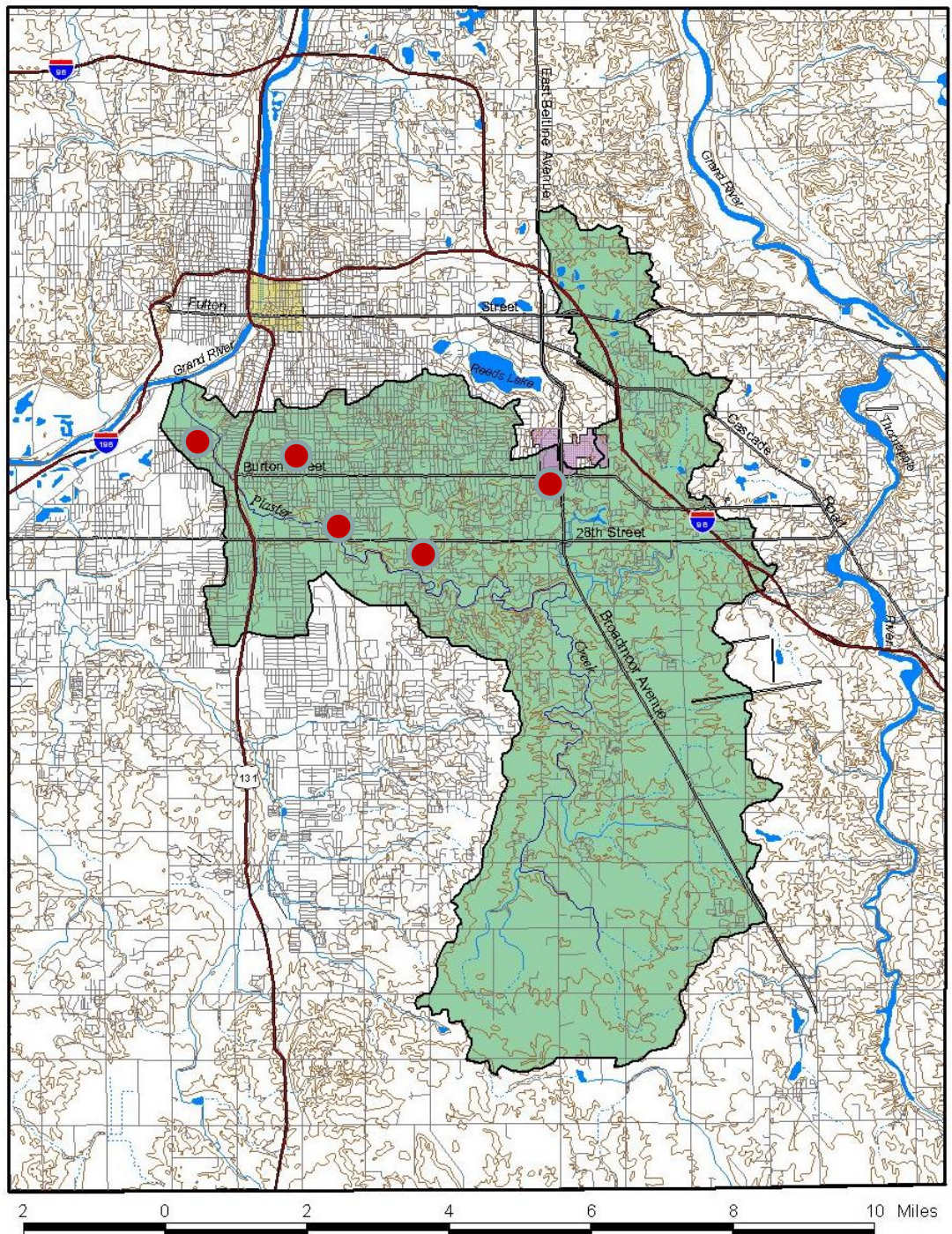
- Calvin College alumnus living within the watershed
- Calvin College alumnus living outside the watershed
- Plaster Creek
- Plaster Creek Watershed
- Downtown Grand Rapids
- Calvin College

Over 3200 Calvin College alumni reside within the watershed of Plaster Creek.

Plaster Creek Watershed

Basic statistics:

- Length: approx. 14 miles
- Watershed area: 58 mi²
- Governmental units: 9 (4 municipalities & 5 townships)



Plaster Creek





Greatest Concerns for Plaster Creek?

- Sedimentation
- Potential pathogens
- Nutrients
- Thermal pollution
- Toxic substances

Plaster Creek Focus Strategies

- Undergraduate teaching and research
- Community partnerships
- Grant funded projects related to sustainability education
- Public education and outreach
- Native landscapes/consulting





Lessons Learned

- Watersheds are great integrators/entry points for environmental stewardship
- Use strengths/identity of institution to develop action strategy.
- Community partnerships reach more diverse audiences.
- Goal of higher education is more than classroom education of students.