

Plaster Creek Stewards Fall event 2011

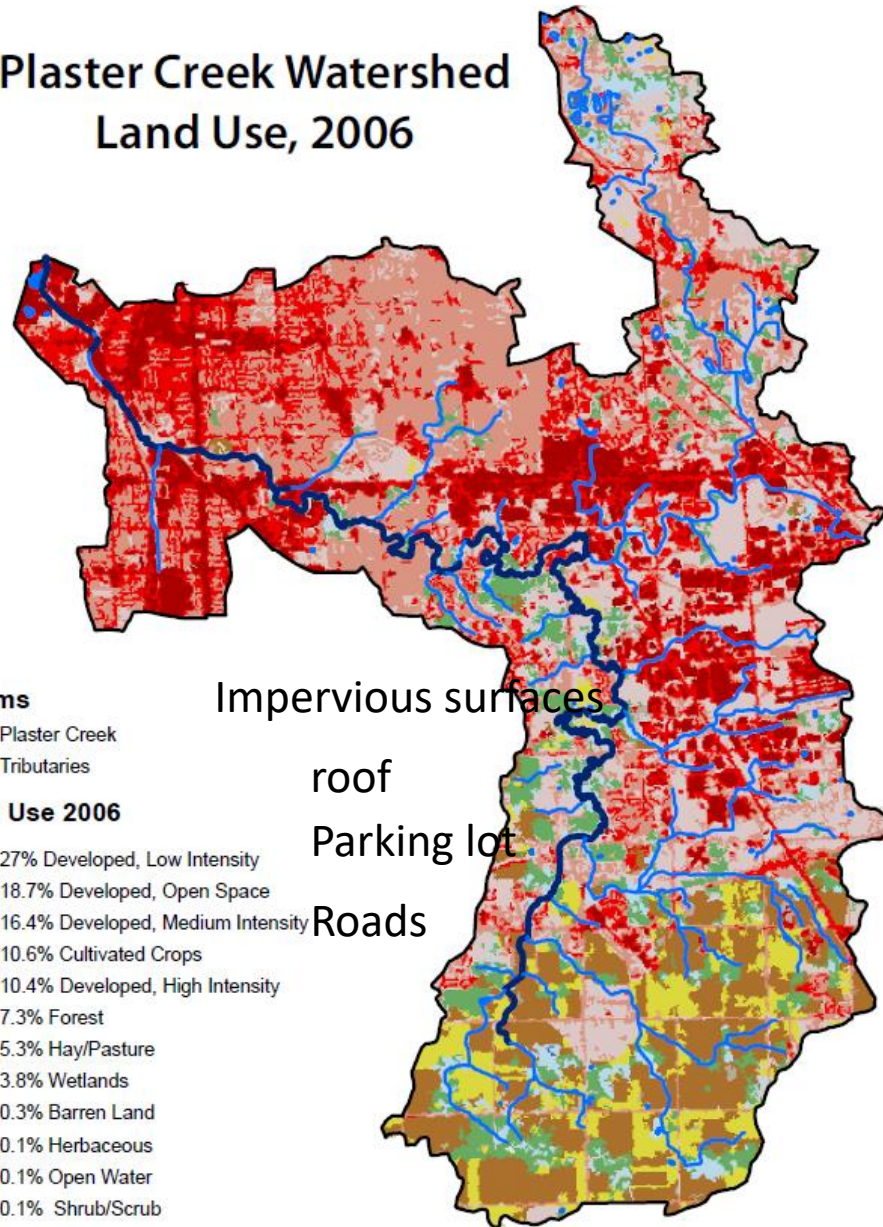


A collaboration of Calvin College faculty and staff, churches, and community partners working to restore health and beauty to the Plaster Creek Watershed.



When it rains... it pours
Where rain goes

Plaster Creek Watershed Land Use, 2006



Streams

- Plaster Creek
- Tributaries

Land Use 2006

- 27% Developed, Low Intensity
- 18.7% Developed, Open Space
- 16.4% Developed, Medium Intensity
- 10.6% Cultivated Crops
- 10.4% Developed, High Intensity
- 7.3% Forest
- 5.3% Hay/Pasture
- 3.8% Wetlands
- 0.3% Barren Land
- 0.1% Herbaceous
- 0.1% Open Water
- 0.1% Shrub/Scrub

Stormwater runoff is rain or snowmelt that runs off of surfaces like rooftops, streets, and parking lots.

It is the single greatest cause of pollution to urban streams.

<http://www.15toriver.org>







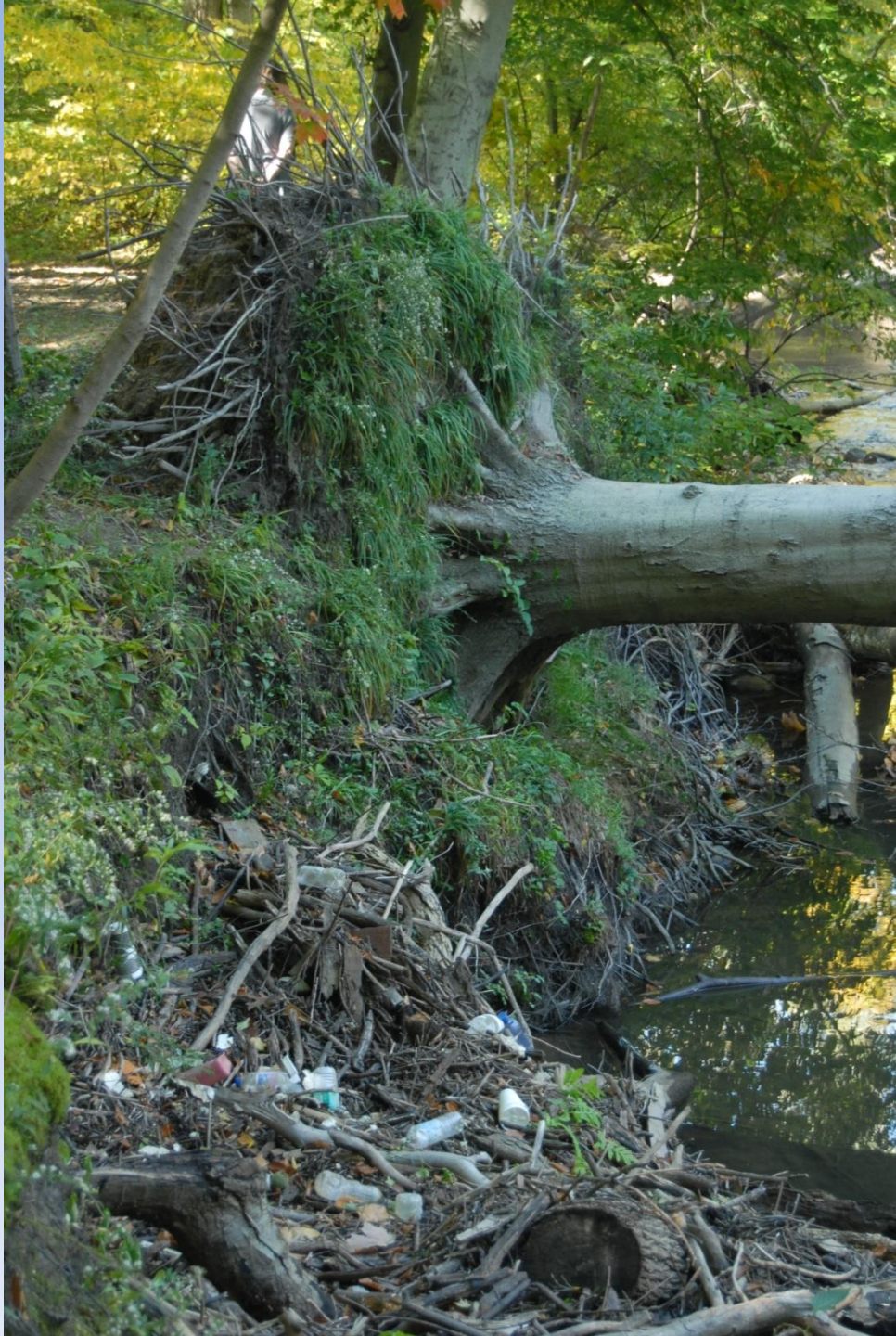




















A lament

... That stream was my playground. ...We knew the individuality of a great many trees, the location particularly of the sycamore that had been eaten out by decay and provided a safe retreat for us on every occasion when it rained. We knew the deep hole which was afterward turned into a swimming place in summer and a skating rink in winter; we knew the kinds of fish that made their home in that creek. We even had a boat a paddled up the stream for miles and enjoyed each summer the beauties of that most delightful natural playground.

[Plaster Creek] has almost nothing now in the way of tree growth from its source to its confluence with the Grand River, and instead of being the beautiful evenflowing stream throughout the year, as in my childhood, **it is now a most fitful affair**, full to the brim and running over at times, yet most of the year it is only a trickling rill.

The playground is gone. Where there was one child then to enjoy that playground there are now eight thousand children who ought to have a playground like this, but a near sighted utilitarianism has snatched it away. We have stolen their rightful heritage from them.

-Charles W. Garfield, "The Peoples Play Grounds" Fortieth Annual Report of the Secretary of the State Horticultural Society of Michigan, 1910.





Low Impact Development (LID)



Rain gardens







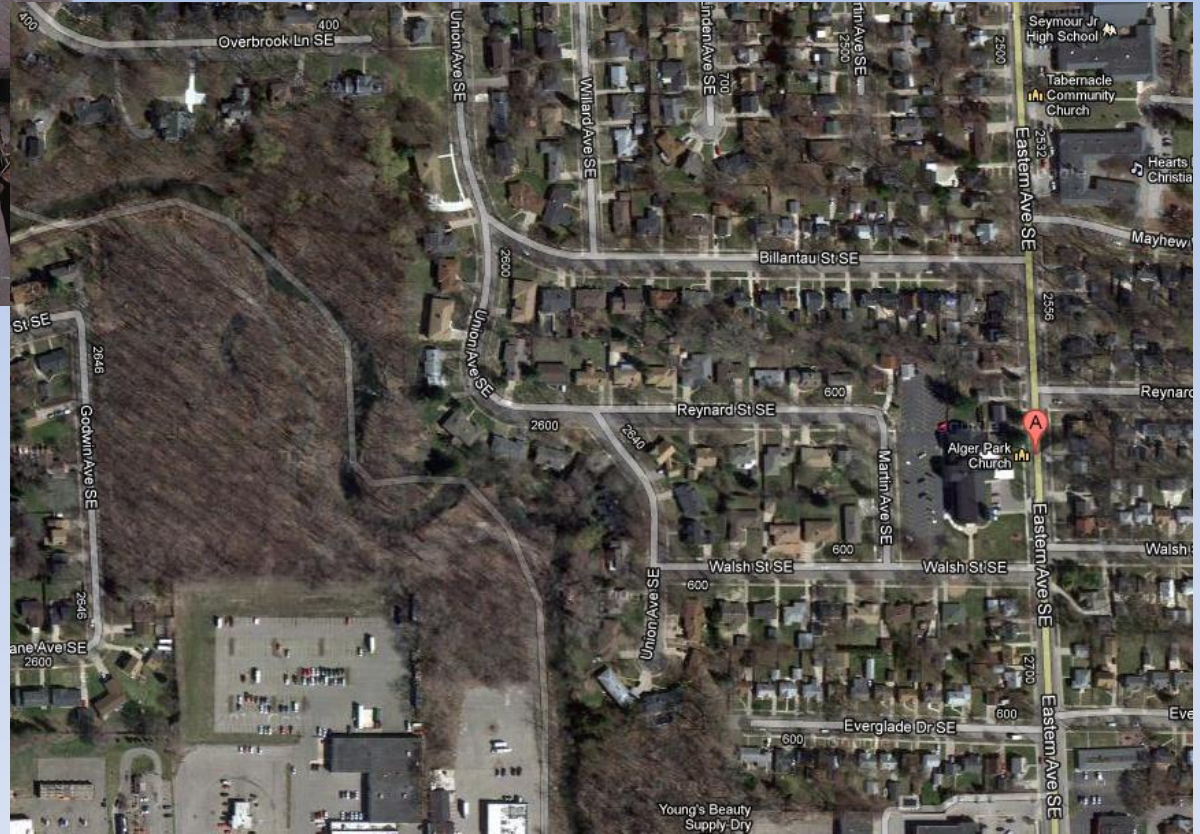








Label storm drains



Corner of Eastern and Walsh

Turn ditches into wetlands

- Bylsmas' farm
- Take E Beltline South
- Turn right on 76th street
- Farm is on your left after Hammond St. Look for greenhouses with mums out front.

