

An aerial photograph showing a large dam structure across a wide river. The river is filled with brown sediment. On the left side of the dam, there is a sandy area with some buildings and a parking lot. On the right side, there is a residential area with houses and trees. The background shows a large body of water, likely a lake or bay, under a clear blue sky.

Loving our Downstream Neighbor:

From Plaster Creek to the St. Lawrence River

Plaster Creek Stewards
Fall event, 2012



CALVIN
MINDS IN THE MAKING



Figure 8 : Whiskey Creek on Campus. Sub basins are outlined and numbered in red. Major reaches of Whiskey Creek are highlighted and numbered in blue.

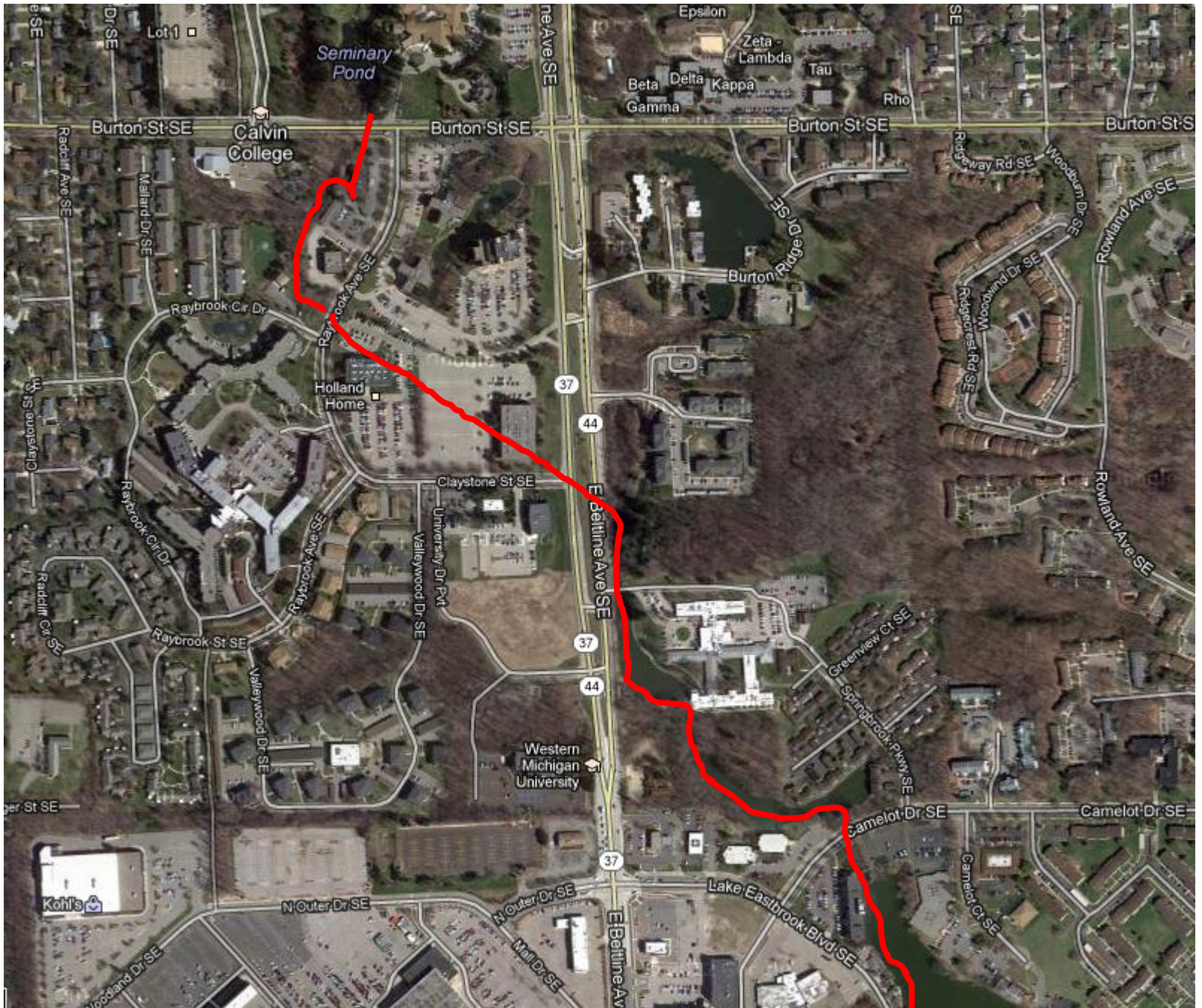




clubs.calvin.edu/chimes/article.php?id=659



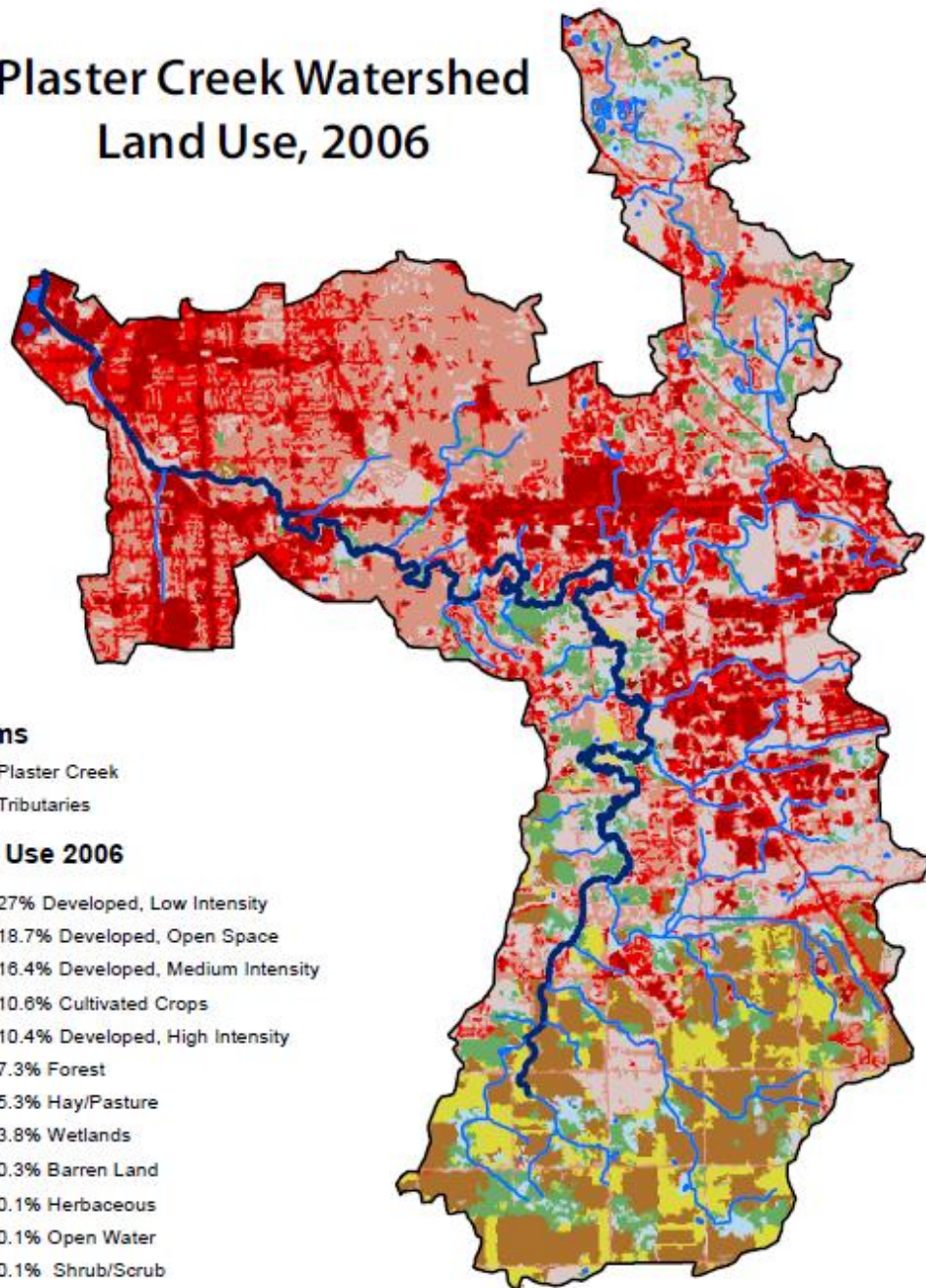
photos.mlive.com/grandrapidspress/2011/02/g0212calvinjump.html







Plaster Creek Watershed Land Use, 2006



Streams

- Plaster Creek
- Tributaries

Land Use 2006

- 27% Developed, Low Intensity
- 18.7% Developed, Open Space
- 16.4% Developed, Medium Intensity
- 10.6% Cultivated Crops
- 10.4% Developed, High Intensity
- 7.3% Forest
- 5.3% Hay/Pasture
- 3.8% Wetlands
- 0.3% Barren Land
- 0.1% Herbaceous
- 0.1% Open Water
- 0.1% Shrub/Scrub

Problems caused by stormwater

- Irregular flow patterns and unnatural flooding in streams and rivers
 - Stream bank erosion
- Thermal pollution (temperature spikes)
- EPA estimates 50-70% of surface water pollution is carried by stormwater runoff
- Lawn/fertilizer nutrients



